

WIRING DIAGRAM

XT+ Releasing Control Unit

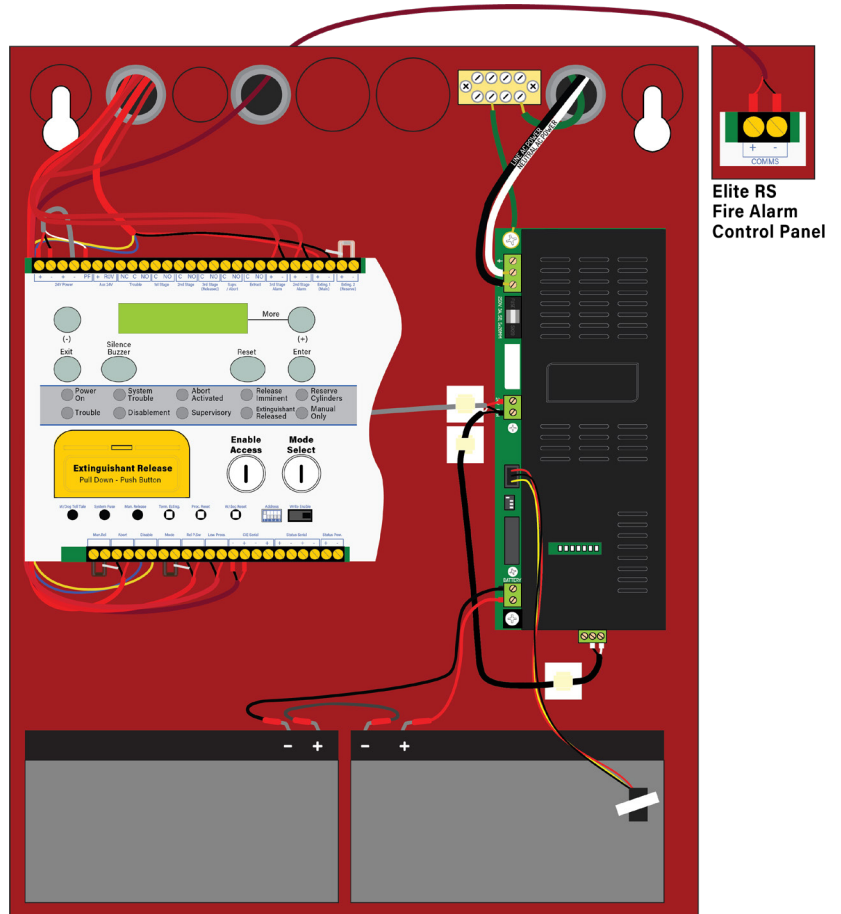
CONTENTS

WIRE ROUTING	2
SETTING THE MODULE ADDRESS	2
POWER SUPPLY	3
3RD STAGE ALARM / 2ND STAGE ALARM	3
EXTING. 1 (MAIN) AND EXTING. 2 (RESERVE).....	3
STANDBY BATTERIES	3
TOP TERMINALS.....	4
BOTTOM TERMINALS.....	5
LIST OF APPROVED DEVICES	6
REFERENCES.....	7

WIRE ROUTING

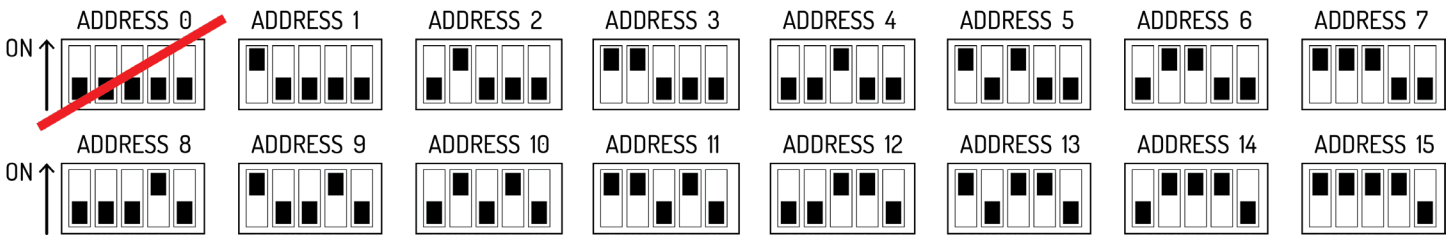
Because the fascia is hinged, route all wiring to the left as shown, so that the fascia can be opened without disconnecting the wiring. Power-limited conductors must be installed using Types FPL, FPLR, FPLP, or equivalent cables. When connecting field wiring, separate high and low voltage wiring in the enclosure with a minimum gap of 0.25”.

Do not route low voltage cabling through the same conduit as AC lines. AC power lines should be threaded through a dedicated conduit. Refer to this illustration when connecting any wiring.



SETTING THE MODULE ADDRESS

Set the address DIP switches on each module to a unique address between 1 and 15.

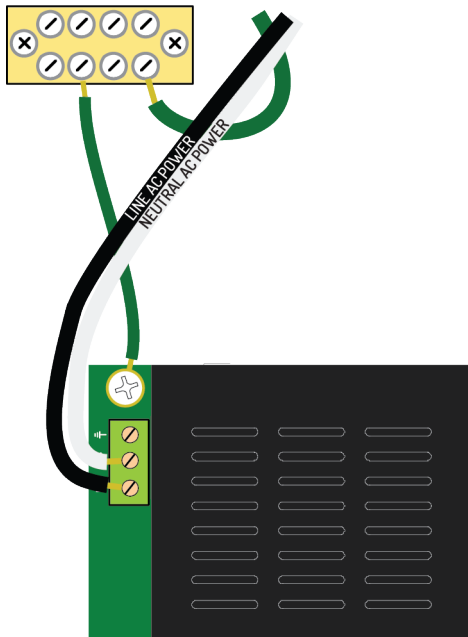


POWER SUPPLY

Connect 18 to 14 AWG wiring for all field terminations except the AC input. Connect 14 AWG wiring for line, neutral, and ground terminations of the AC input.

AC SUPPLY CIRCUIT SPECIFICATIONS

L	AC Power 1.83 Amps Max @ 120 V, 50/60 Hz 0.915 Amps Max @ 240 V, 50/60 Hz
N	Neutral
G	Earth Ground



STANDBY BATTERIES

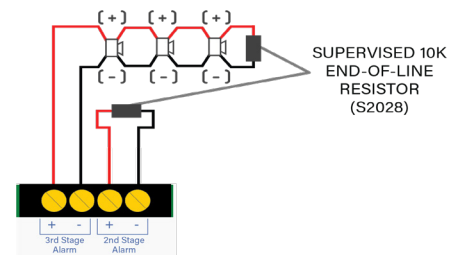
RECHARGABLE BATTERY SPECIFICATIONS

Standby Battery Type	12 VDC, valve-regulated lead acid
Standby Battery Charging	Two standby batteries wired in series
Maximum Amp Hour Capacity	60 AH maximum
Charge Current	1.25 A Max
Output Current	4 A Max
Standby Operating Time	24 Hours
Battery Charge Voltage	27.6 VDC

3RD STAGE ALARM / 2ND STAGE ALARM

Each terminal provides a regulated 24V DC, 850 mA maximum output for non-pulsing audible loads.

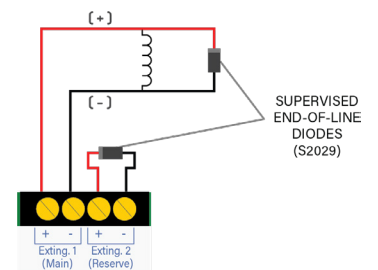
- Required EOL: 10k Ohm Resistor (S2028)
- Maximum Line Loss: 4V
- Maximum RMS Current for any Single Appliance: 300 mA



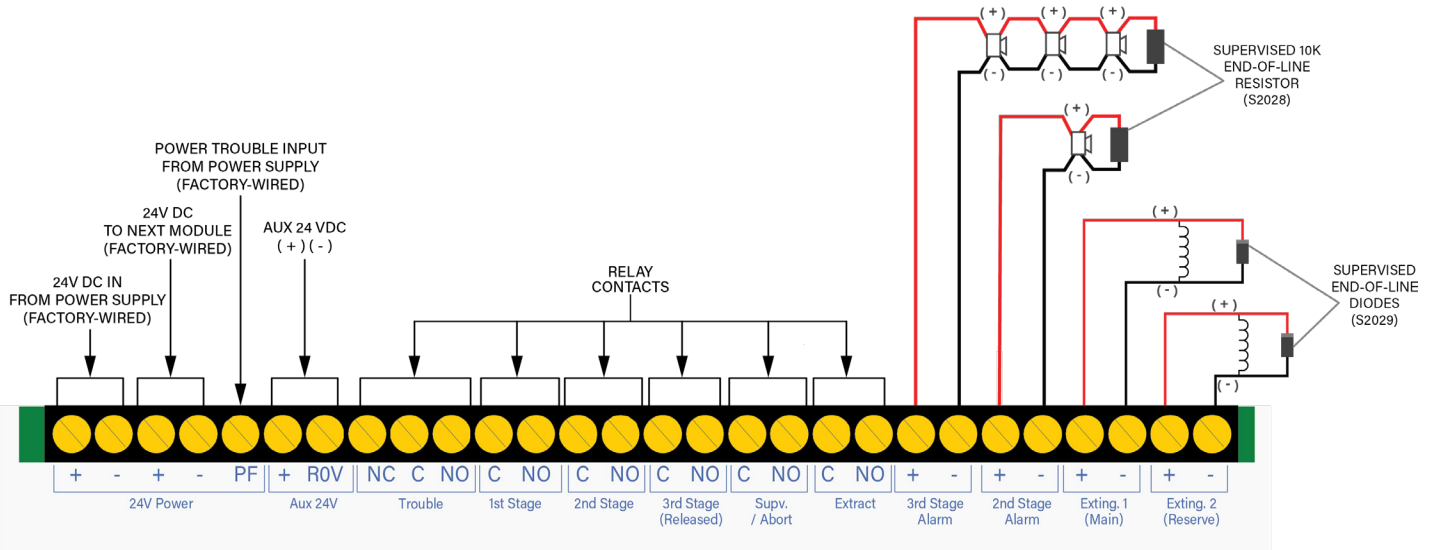
EXTING. 1 (MAIN) AND EXTING. 2 (RESERVE)

The Exting. 1 and Exting. 2 are class B circuits, each providing regulated 24V DC at 1A maximum. They can be connected to a releasing agent control valves as shown.

- Required EOL: EOL Diode (S2029)



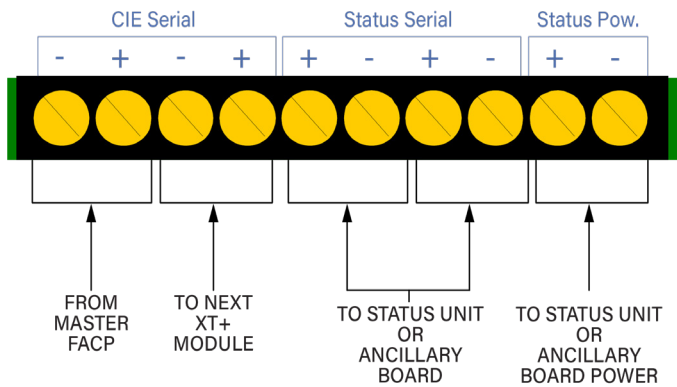
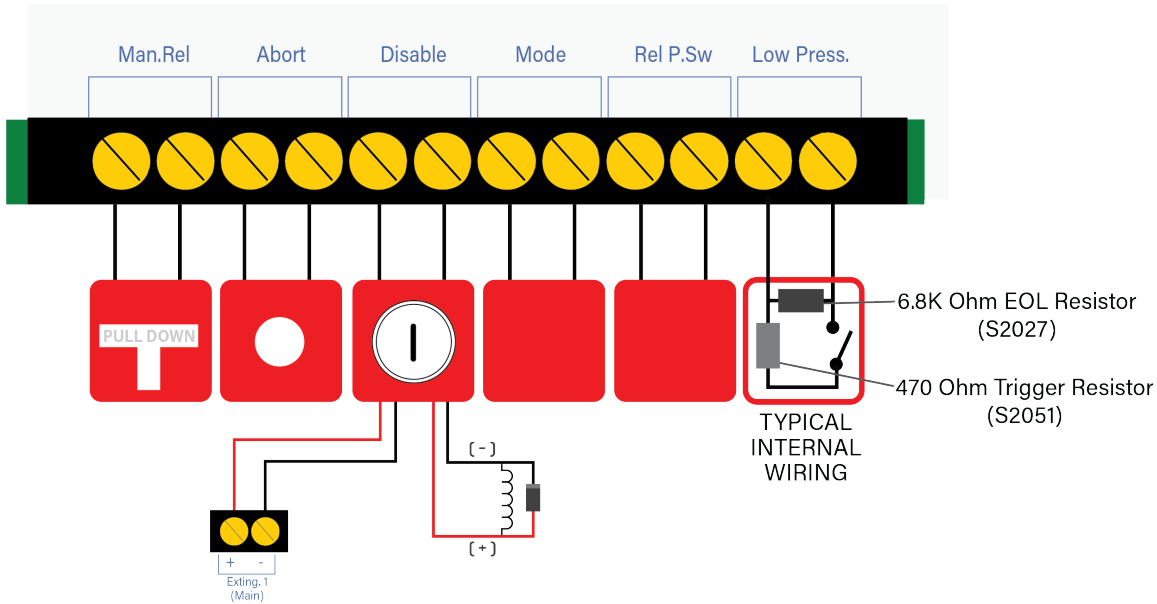
TOP TERMINALS



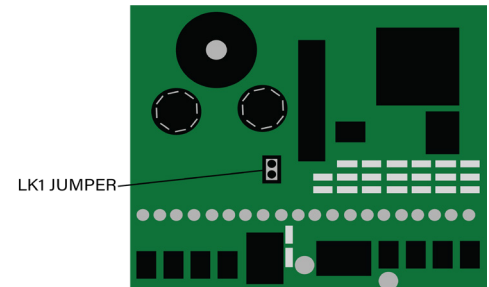
TOP TERMINAL SPECIFICATIONS

24V Power	24V Regulated, continuous (power input)
Aux 24V	24V Regulated @ 850mA Max, Power-limited
Trouble	Volt-free contact rated at 30V DC, 1A, Resistive
1st Stage	Volt-free contact rated at 30V DC, 1A, Resistive
2nd Stage	Volt-free contact rated at 30V DC, 1A, Resistive
3rd Stage (Released)	Volt-free contact rated at 30V DC, 1A, Resistive
Supv. / Abort	Volt-free contact rated at 30V DC, 1A, Resistive
Extract	Volt-free contact rated at 30V DC, 1A, Resistive
3rd Stage Alarm	24V Regulated @ 850mA Max, Power-limited
2nd Stage Alarm	24V Regulated @ 850mA Max, Power-limited
Exting. 1 (Main)	24V Regulated @ 1A Max, Power-limited
Exting. 2 (Reserve)	24V Regulated @ 1A Max, Power-limited

BOTTOM TERMINALS



IMPORTANT! Remove the jumper LK1 from each module unless the module is the last device on the CIE serial bus.



BOTTOM TERMINAL SPECIFICATIONS

Man. Rel	Class B
Abort	Supervised for opens, shorts, and grounds
Disable	End-of-Line device: 6.8K Ohm resistor (S2027)
Mode	Activation device: 470 Ohm resistor (S2051)
Rel P. Sw	Maximum Voltage / Current: 24V DC / 50 mA
Low Press.	Maximum Wiring Impedance for Each Circuit: 50 Ohms
	Power-limited
CIE Serial	Two wire, RS485 connection, Data 3.3 V, current-limited, Class B, supervised
Status Serial	Two wire, RS485 connection, Data 3.3 V, current-limited, Class B, supervised
Status Pow.	24V Regulated @ 850mA Max, Power-limited

LIST OF APPROVED DEVICES

ACCESSORIES

K1822-10 K1822-40	Ancillary Board with Enclosure
K1823-10 K1823-40	Abort Switch, Suitable for Releasing
	XT+ Status Unit
K1821-11	Surface mount, Red
K1821-12	Flush mount, Red
K1821-13	Surface mount with Keypad, Red
K1821-14	Flush mount with Keypad, Red
K1821-41	Surface mount, Grey
K1821-42	Flush mount, Grey
K1821-43	Surface mount with Keypad, Grey
K1821-44	Flush mount with Keypad, Grey
K1832-10 K1832-40	Manual Extinguishant Disablement Switch
	Sequential Activator, Suitable for Releasing
K1824-10	Standard cabinet, Red
K1824-11	Large cabinet, Red
K1824-40	Standard cabinet, Gray
K1824-41	Large cabinet, Gray

COMPATIBLE RELEASING DEVICES

ASCO	8210G207
ASCO	HV2185328
Fire Eater	305451 Ci IS8B Solenoid and Manual
Fire Eater	305450 Ci IS8B Solenoid
Firetrace, TLX Technologies	Linear Actuator-FTF500125 or 01-501462; TLX Technologies PA0128-5
Firetrace	FTF500024, Solenoid, 24VDC, 11W
Firetrace	FTF501224, Solenoid, 24VDC, 15W
Janus	18481
Kidde	B6793-859: The B6793-859 is equivalent to Kidde-Fenwall 81-100000-001
Kidde	K-45-8017: The K-45-8017 is equivalent to Kidde-Fenwall 486500-01
Safety Hi-Tech	SH21006404
Safety Hi-Tech	SH21006403
Sevo Systems, TLX Technologies	SOL EA45: The SOL EA45 is equivalent to Sevo Systems 510006 and TLX Technologies PA0036-3
Snap-Tite, Sevo Systems, Orient Chemori, Solenoid Solutions	2823A-2NB-A4F6
Victaulic	Series 753-E FireLock
Viking	11596
Viking	11595
Viking	11592
Viking	11602
Viking	11601
Viking	11591

SPECIAL RELEASING ACCESSORIES

Kentec Electronics Sequential Activator	K1824-10 or -40 (Red or Gray)
	K1824-11 or -41 (Red or Gray)
	FP-SA/GEN3.0 (Gray)
	FP-SA/GEN3.0R (Red)
	FP-SA/GEN3M8 (Gray)
	FP-SA/GEN3M8R (Red)

FirePro Fixed Condensed Aerosol Extinguishing System Units	FP-20SE (FNX-20S)
	FP-20T (FNX-20T)
	FP-40S (FNX-40S)
	FP-40T (FNX-40T)
	FP-80S (FNX-80S)
	FP-80T (FNX-80T)
	FP-100S (FNX-100S)
	FP-200S (FNX-200S)
	FP-500S (FNX-500S)
	FP-1200 (FNX-1200)
	FP-1200S (FNX-1200S)
	FP-1200T (FNX-1200T)
	FP-1200TS (FNX-1200TS)
	FP-2000 (FNX-2000)
	FP-2000S (FNX-2000S)
	FP-2000T (FNX-2000T)
	FP-2000TS (FNX-2000TS)
	FP-3000 (FNX-3000)
	FP-3000S (FNX-3000S)
	FP-3000T (FNX-3000T)
	FP-3000TS (FNX-3000TS)
	FP-4200T (FNX-4200T)
	FP-4200TS (FNX-4200TS)
FP-5700 (FNX-5700)	
FP-5700S (FNX-5700S)	
FP-5700T (FNX-5700T)	
FP-5700TS (FNX-5700TS)	

Please refer to instructions included with Sequential Activator for proper wiring.

REFERENCES

Reference the following documentation for installing, operating, and configuring this device with the XT+ Releasing Control Unit:

- *XT+ Releasing Control Unit Installation Manual*, MAN-1252KE
- *XT+ Releasing Control Unit Operating Instructions*, MAN-1253KE

For technical support, contact Kentec Electronics, Ltd at +44 (0)1322 222121 or techsupport@kentec.co.uk.

Document Number MAN-1255KE
Version 1.00
December 2018