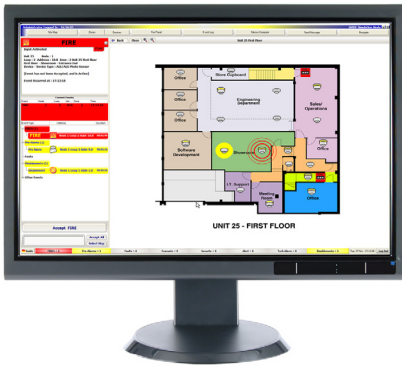


GUIDE | Graphical User Interface for Fire Detection Systems

VF593-1X



Ordering Codes

VF1593-10	GUIDE Software - 1 node
VF1593-11	GUIDE Software - 2-4 nodes
VF1593-12	GUIDE Software - 5-8 nodes
VF1593-13	GUIDE Software - 9-16 nodes
VF1593-14	GUIDE Software - 17-32 nodes
VF1593-15	GUIDE Software - 33-64 nodes

NOTE For use with Elite & Elite RS Panels.

Product Overview

Elite fire control panels can send data to, and be controlled by, the GUIDE system providing a single point of control for all alarms. The powerful 32-bit program features a standard Windows look and feel and runs under Windows® XP, Vista, or Windows® 7&10.

The system is highly configurable in terms of the style of presentation so that the end user can be presented with maps, text, photographs, audio, or a combination of all as required.

User profiles allow the system manager to control the options available to each individual system user. A comprehensive history logging and reporting system allows analysis of events and trends to be identified to reduce unwanted alarms.

Easy to program and simple to use, GUIDE provides a cost-effective solution for fire alarm management at many levels.

Standard Features

- Choice of text, graphic, event list display when an event occurs
- Versatile event analysis
- Total history archive
- Easy to program
- Secure system
- Cost effective compared to other systems
- Simple to use
- Unlimited map linking & zoom capability
- Support for 100's of graphics
- Display and control for multiple panels
- Event history explore and export to text or HTML documents

Technical Specifications

Processor	Intel Pentium 1Ghz
Operating System	Windows® XP/Vista/ Windows 7 & 10 Professional - Will operate under Windows® 2000
Memory	256MB minimum
Hard Drive	10GB minimum (20GB recommended)
Graphics	1024 x 768 16M colors - The driver must allow this mode with large fonts. Separate Graphics card with 256MB graphics memory recommended.
Sound Card	Any compatible sound card
Speakers	Any compatible speakers
Monitor	Any compatible monitor that supports the installed graphics card. 17" minimum recommended.
Pointing Device	REQUIRED. Third button and wheels are supported.
Printer	Optional. Any compatible printer.
Parallel Port	Optional.
USB Ports	One per network. Isolated converter supplied for connection to fire alarm system.
CD-ROM Drive	Any compatible drive. Required for installation of software and updates.
Backup Drive	CD Writer

NOTE GUIDE will be operating for 24 hours a day for many years. It may be desirable to include onsite PC maintenance as part of the package.